

# The Essex Foundation

The Essex Foundation  
PO Box 64  
Essex, CT 06426

NONPROFIT ORG  
U.S. POSTAGE PAID  
OLD SAYBROOK CT  
PERMIT NO. 30

## Essex Memorial Hall Parking Lot

In June, The Essex Foundation Board of Directors responded to a request for financial assistance from the Essex Veterans Memorial Hall, the last known stand-alone 501(c)(19) nonprofit veterans organization on the East Coast. The donated funds were used to fully underwrite the cost of paving the 10,633 square-foot gravel parking lot on the group's property located at 3 Westbrook Road in Centerbrook. Sullivan Paving Company submitted the winning bid, which also included a donation of their time and materials to line stripe and mark the new pavement. The work was completed in the summer.

The paving project is one of several recent initiatives undertaken by the Hall's 184 members to improve the building's interior and exterior. Once the Centerbrook Schoolhouse, the building became Essex Veterans Memorial Hall in 1946, and now serves as a resource for veterans, their families, and the greater community, including free hall usage to area scout groups and nonprofit organizations. The Essex Foundation board members considered all of these factors when making the funding decision, agreeing that the project fell within their typical parameters of being of benefit to Essex residents, of being somewhat unique, and requiring relatively quick action.



*The Essex Foundation Board of Directors presented a check to members of Essex Veterans Memorial Hall for the paving of the parking lot area. From left to right are Judy Bombaci, Jim Clark, Bruce Glowac, Sam Riggio (EVMH member), Alex Breen (EVMH member), Herb Clark, and Strick Hyde.*

## 2017 Board of Directors

Bruce Glowac, *President*

Jay Tonks, *Vice President*

Herbert T. Clark III, *Treasurer*

Judy Bombaci, *Secretary*

James Clark

Strickland Hyde III

## Consider A Legacy Donation

If you like what The Essex Foundation does, please consider the possibility of a legacy donation. A gift through your will or living trust will continue your support of The Essex Foundation as an important legacy in our community. Many of our donors use their wills or living trusts to make their most generous gifts. A charitable bequest is also an excellent way to create a living memorial. For more information, please contact Essex Foundation Treasurer Herb Clark at (860)767-0000.

The Essex Foundation also relies on the many gifts sent by individual donors in dollar amounts of their choosing. *Use the enclosed envelope or mail a check to: The Essex Foundation, PO Box 64, Essex, CT 06426.* Donations can also be made online at: [www.theessexfoundation.org](http://www.theessexfoundation.org).

*All donations are tax-deductible to the full extent provided by the law.*

# The Essex Foundation

## 2017 Community News

The Essex Foundation is a nonprofit corporation dedicated to making a difference in the lives of Essex citizens by providing support for medical, educational, social welfare, cultural, recreational, and civic needs. The Foundation's role is to provide "seed money" for new services and to allocate funds to fill needs not met by other organizations or sources. In general, funds are granted for special purposes, including land, buildings, equipment, and programs, but not to recurring expenses. With a 44-year history of service to Centerbrook, Essex, and Ivoryton, The Essex Foundation continues to expand its support for community projects that require fast, local action. This past year saw the completion of many initiatives, and the beginning of others, all tackled in partnership with town officials, residents, and like-minded organizations. The resulting community news is shared here.

# The Essex Foundation

## Gateway Beautification Project

This year, The Essex Foundation completed the first and second phase of a multi-phase landscape plan for the grounds surrounding the newly painted highway bridge in the Route 9/ Exit 3 underpass area of Essex. In April, twelve Chanticleer pear trees were planted on the state-owned land south of the Route 154 and Route 153 intersection, directly across from the Essex Fire Department station and commuter lot.

The Chanticleer pear tree was selected for its beauty and hardiness. It is one of the most profuse flowering trees with a narrow, tailored appearance. It tolerates many urban conditions, making it a popular street tree choice where spread may be a bit limited.



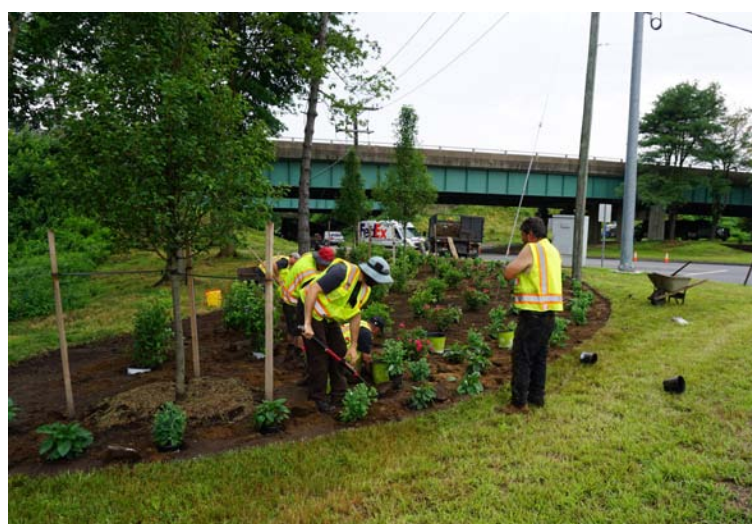
In July, the next phase began with the planting of low growing, low-maintenance evergreen and perennial ornamentals in the southeast corner of the gateway area. Over 300 plants were installed. With the goal of creating a colorful, year-round visual display that is both drought tolerant and resistant to pests, board members opted for a combination of Viburnum, KnockOut Rose, Black-eyed Susan, Sedum Autumn Joy and Winterberry.

Funds for the cost of the planning, plant purchase and installation were provided through a bequest to The Essex Foundation by the late Elizabeth "Diz" Barnes Callender and her predeceased sister Mary Frances Barnes.



The Essex Foundation contracted with Matthew Verry, a graduate of the University of Connecticut Landscape Architecture program, for planning and coordination of the work. His company, Matthew Verry Landscape Design, provided the landscape design and oversight of the state approval and installation bid process. Sullivan Lawn Services was hired for the installation work.

The gateway beautification project, which included funding for the highway bridge painting, is a good example of the community effort supported by The Essex Foundation – somewhat unique, requires quick action, and has an immediate impact.



*Sullivan Lawn Services crew members installed trees and plants at the intersection of Route 154 and Route 153.*

## Essex Place Furnishings

Two weeks before the grand opening of Essex Place, a 22-unit, affordable senior rental housing complex developed by Essex Elderly & Affordable Housing, Inc. and the Women's Institute of Housing & Economic Development, The Essex Foundation was called upon to help cover the cost of furniture for the common area spaces. Last minute adjustments to the overall project budget left no available funds for completing the already constructed community room, game room, office, and kitchen.

After a presentation by Janice Atkeson and Yolanda Lowe, both representing Essex Elderly and Affordable Housing, Inc., The Essex Foundation Board of Directors approved their request for financial assistance. Funds were used to cover the cost of upholstered furniture, dining tables, game tables, occasional tables, stacking chairs, office furniture, and miscellaneous kitchen items. Essex Place is located at 26 Main Street in the Centerbrook section of Essex, adjacent to the Essex Court senior apartments. The common areas are accessible to all residents of Essex Place and Essex Court, and are used for general meetings and as a designated emergency shelter.



*Bruce Glowac presents a check to Janice Atkeson at Essex Place, the newly constructed affordable senior housing complex on Main Street in Centerbrook.*

As trustee for the Bumpy Warner Youth House on Bushnell Street for over 30 years, the Foundation continues to manage and provide support for its maintenance and repair. The building serves as headquarters for the Essex Boy Scout program.

## President's Letter

Dear Friends,

This year, when the Essex Veterans Memorial Hall asked The Essex Foundation if we could lend financial assistance for the paving of their parking and driveway area, we responded by donating funds to do the entire project.

When the Essex Place affordable, senior housing complex realized they were reaching completion and did not have sufficient funds to buy furniture for their common areas, The Essex Foundation responded by donating funds to furnish the areas in time for their opening.

These are the types of projects that fulfill The Essex Foundation's mission of doing good things for the citizens of Essex. Our ability to react quickly to diverse and reasonable requests not typically funded by other charitable organizations is at the heart of what we do.

Additionally in 2017, the Foundation continued to improve the Route 153 and Route 154 intersection area. As you may recall last year, the Foundation coordinated and facilitated the painting of the Route 9 overpass bridges. This spring, we planted Chanticleer pear trees along the southern side of Route 154 and installed perennial beds on two of the intersection corners, all part of our long-term plans to continue to beautify the gateway to our community.

Lastly, we continued to provide for the maintenance of the Bumpy Warner Youth house, which is home to our local Boy Scouts, and also funded other scout-related activities.

All of these projects were made possible because of the support we received from citizens like you. Thank you, and please rest assured, that whether small or large, your tax-deductible contribution to The Essex Foundation will be put to good use for the betterment of our community.

Sincerely yours,  
Bruce Glowac  
President

